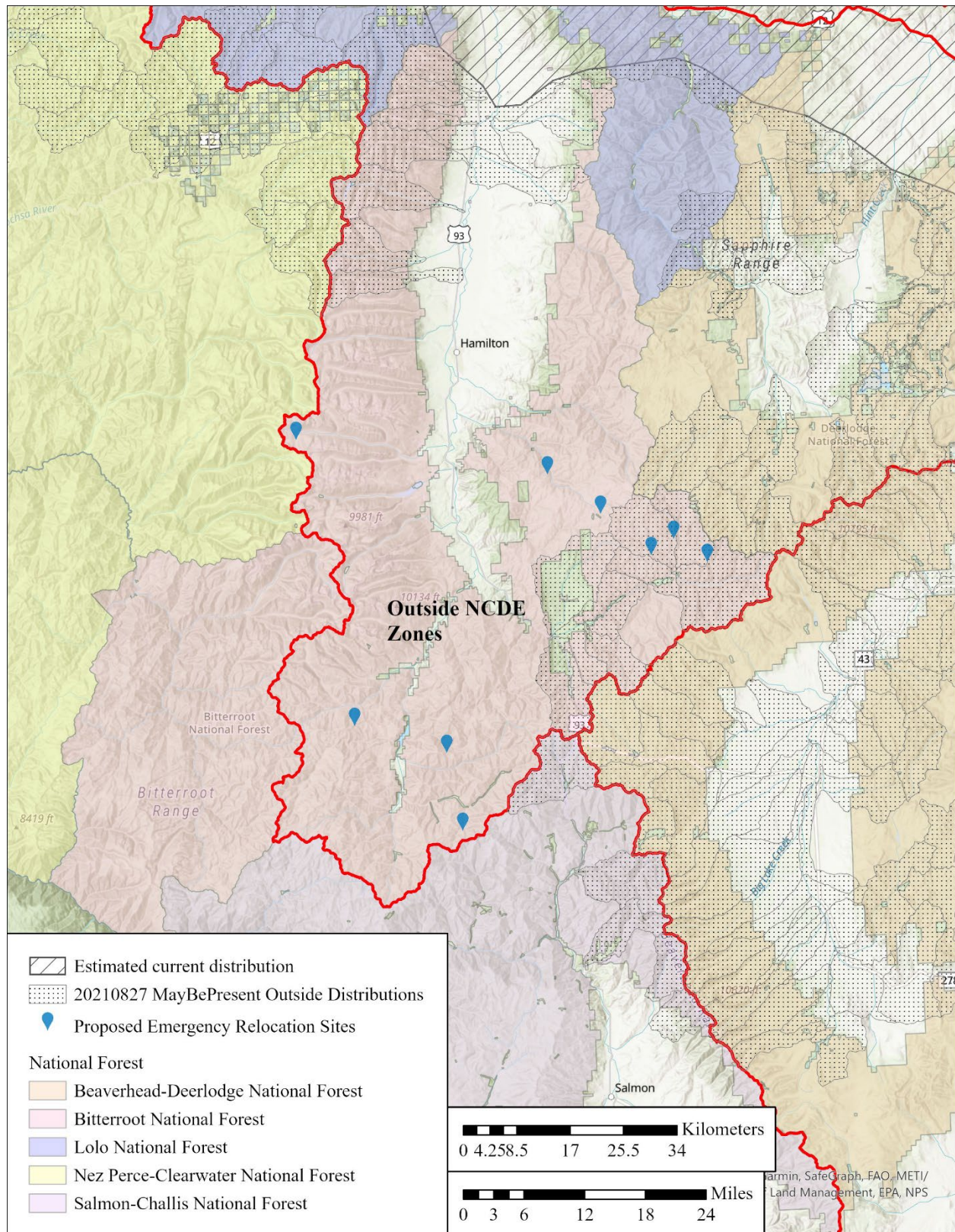


Proposed Relocation Sites for Bitterroot NF for Discussion (August 27, 2021)



<b>Name</b>	<b>Latitude</b>	<b>Longitude</b>	<b>Google Map Pin</b>
Martin Creek, East Fork of the BR	45.94796	-113.772	<a href="https://goo.gl/maps/yXjeSNn94vWFFXPz6">https://goo.gl/maps/yXjeSNn94vWFFXPz6</a>
Lick Creek Saddle, East Fork of BR	45.93497	-113.658	<a href="https://goo.gl/maps/9Qo9WgvST8whSZmi7">https://goo.gl/maps/9Qo9WgvST8whSZmi7</a>
Bush Creek/Fish Lake Basin, East Fork of BR	45.96987	-113.725	<a href="https://goo.gl/maps/UnPyF34BHTB9Np5M8">https://goo.gl/maps/UnPyF34BHTB9Np5M8</a>
Bare Cone Lookout, West Fork BR	45.71948	-114.392	<a href="https://goo.gl/maps/M99xh1Rxw9PTRBLS7">https://goo.gl/maps/M99xh1Rxw9PTRBLS7</a>
Upper Mine Creek/Hughs Creek West Fork of the Bitterroot	45.56437	-114.178	<a href="https://goo.gl/maps/Qn9kQMzmHh53Ftuq9">https://goo.gl/maps/Qn9kQMzmHh53Ftuq9</a>
Overwhich Creek Saddle, West Fork of the BR	45.67643	-114.206	<a href="https://goo.gl/maps/KTYyfHCdFBVricUX8">https://goo.gl/maps/KTYyfHCdFBVricUX8</a>
Crystal Point, Sapphire Range	46.00999	-113.873	<a href="https://goo.gl/maps/3Rk9VdBujTSUBg6D7">https://goo.gl/maps/3Rk9VdBujTSUBg6D7</a>
Divide Creek/Rooster Comb, Sapphire Range	46.06911	-113.979	<a href="https://goo.gl/maps/ZgxL7BJQmmhNjRtAA">https://goo.gl/maps/ZgxL7BJQmmhNjRtAA</a>
Lost Horse Creek, Bitterroot Mountains	46.13091	-114.493	<a href="https://goo.gl/maps/tZpiDzYiqmD4dZqG7">https://goo.gl/maps/tZpiDzYiqmD4dZqG7</a>